

COMPARISON

Bandit 2890 > Vermeer SC1052

CUTTER WHEEL OPTIONS

Two different cutter wheel options are available for the 2890. A Bandit wheel with Greenteeth or a New Revolution wheel with hex teeth. Bandit offers these two cutter wheel options so customers can choose the best set-up that meets their needs.



Greenteeth Wheel

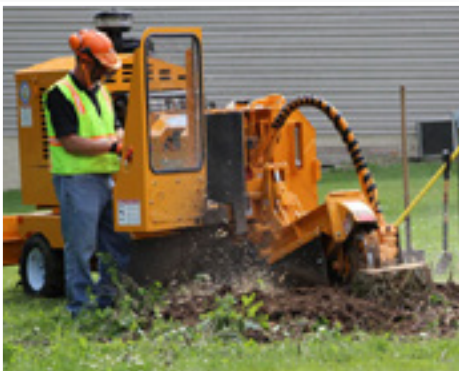


New Revolution Wheel



ENGINE TORQUE

The 2890 is offered with either a Caterpillar 120 horsepower diesel engine or PSI 165 horsepower gas engine providing engine torque of 352 – 362 ft lbs. The Vermeer SC1052 is offered with an Origin 115 horsepower gas engine listed with 231 ft / lbs. of torque. The engine torque difference on the 2890 is 52% greater compared to the SC1052.



6750 MILLBROOK ROAD
REMUS, MICHIGAN 49340

1-800-952-0178

WWW.BANDITCHIPPERS.COM



All specifications, dimensions and options are subject to change without notice, and were current at the time of printing. Dimensions may vary, depending on options and engines selected. Bandit Industries, Inc. reserves the right to change designs, specifications and options without prior notice. © 2023 Bandit Industries, Inc. All Rights Reserved.

CALL YOUR LOCAL BANDIT SALES REPRESENTATIVE TO SCHEDULE A DEMONSTRATION TODAY!

MANUFACTURER:	BANDIT	VERMEER
Configuration:	2890	SC1052
DIMENSIONS		
Length:	162"	152"
Minimum Width:	35"	56"
Maximum Width:	55.5"	35"
Height:	80"	80"
Weight:	5,320 lbs.	4,460 lbs.
ENGINE		
Engine:	Cat diesel or PSI gas	Origin 4.3L (gas)
Horsepower Range:	120 or 165	115 HP
CUTTER WHEEL SYSTEM		
Cutterwheel Dimensions:	25.5" diameter x 1.50" thick	26" diameter x .6" thick
RPM:	1525 RPM	1014 RPM
Engagement:	Hydrostatic	Hydrostatic
Drive:	Hydraulic Motor	Driveshaft / Lower Gearbox
Number of Teeth:	24 or 32	24
Cutter Swing (inches):	75"	72"
Cutter Depth (inches):	24"	25"
Cutter Height (inches):	31.5"	31"
Containment:	25.96 cu / ft	28.2 cu / ft
DRIVE SYSTEM		
Tires/Tracks:	Tires	Tires
Travel Speed:	1.36 MPH	.90 - 1.59 MPH
TANKS		
Fuel Tank:	12.5 Gallon	18 Gallon
Hydraulic Tank:	29.5 Gallon	18.4 Gallon
CONTROLS		
Controls:	Console or Radio remote	Console or Radio remote

BANDIT OFFERS A COMPLETE LINE OF TREE CARE EQUIPMENT:

Hand-Fed Chippers • Stump Grinders • Whole Tree Chippers
 The Beast® Horizontal Grinders • Track Carriers • Attachments